



Revive Your Ride

Snowmobile Tracks



camoplast

HI-PERFORMANCE TRACKS

Camoplast: Engineered for Peak Performance

Camoplast snowmobile tracks are precision-engineered to deliver exactly the kind of performance you're looking for. Every track our engineers create features optimized design for weight, traction, strength, flotation, and even aerodynamics—not to mention affordability, longevity, and sheer fun!

Over 90% of all new sleds built are equipped with Camoplast tracks.

Snowmobile manufacturers do a great job selecting tracks for their machines, and stock tracks are fine for general riding. But what if you're looking to put a newer track on an older machine to improve performance, or tweak the track on your new model to better suit your riding style? At Camoplast, we're constantly developing new designs to help you revive your ride and make the most out of winter!

Why a New Track?

Has your sled lost the performance edge it had when it was new? Or are you looking for some extra excitement from your stock machine? **Bring back that new-sled feeling** with a Camoplast replacement track – or **take your ride to an all-new level** with a Camoplast high-performance upgrade.

Why shell out big bucks for a new sled or risk voiding your warranty with performance-enhancing engine modifications? Camoplast tracks are an effective and affordable way to breathe new life back into your sled, boosting its performance to revive your ride and make the most out of winter.

“

I've tested and run tons of tracks over the years, and without a doubt, my Camoplast tracks are one of the reasons I pull so many holeshots!

Ross Martin,
Professional Snocross Rider,
3-time Pro Open National Champion,
4-time X-Game Medalist

”



A Better Ride in so Many Ways

No matter what you ride or how you ride it, a Camoplast track puts your sled's power where it belongs—on the snow. **You'll feel the difference in so many ways!**

- Better traction on any surface
- Better handling and stability
- Quicker acceleration
- Shorter stopping distances on hard surfaces
- Better flotation in soft, deep snow

And that's not all! Depending on your track model and riding style, there are other benefits too—like higher top speed, better fuel economy, and a longer useful life. Plus, with the Camoplast name on your track, you increase your sled's resale value!



“

These tracks are developed by snowmobilers—they know what it takes to make snowmobiling fun, and understand the needs of the different segments that have developed in snowmobiling over the years.

Jim Keding, who has been testing and developing snowmobile tracks for 35 years

”



“

At age 67, I still get a kick from this sport—especially when I’m using great quality products that suit my needs. My advice for riders of all ages is to ask yourself what kind of style defines you, and to find the track that’s right for you. Your time on the sled will never be the same!

Denis Courtemanche, Director of Engineering,
Recreational Products,
affiliated with Camoplast for 50 years

”

Make the Most Out of Winter

It doesn’t matter if you’re a recreational rider or a racer, whether you prefer groomed trails or backcountry exploration, whether you seek the adrenaline rush of steep terrain or the comfort of a casual cruise in the countryside. As riders, we share one true north: our passion for snow. We love it. We pray for it. We live by the notion that **snow makes living better.**

To get the maximum excitement out of your sled in the conditions you prefer, select the best track for the type of rider you are. Whatever your pleasure, Camoplast has the tracks to help you revive your ride and **make the most out of winter.**

Trail Rider

You’re an aggressive or power rider, someone who loves well-defined routes. For you, **snow makes cruising better**, whether you’re riding on partially maintained surfaces, carving corners or flooring it on the straightaways.

- Groomed snowmobile trails
- Ungroomed trails that are used enough to be compacted most or all of the time
- Bare or lightly covered ice with special traction challenges

Cross-Country Rider

Your preference runs to deeper, looser snow. Racking up the miles in the backcountry? Check. Half on-trail, half off? Check. After all, you can handle anything with control – and passion. Whatever the challenge, you’re up for it. **For you, snow makes playing better.**

- Ditch lines
- Less-used and completely ungroomed trails
- Boondocking in remote areas with no trails

Mountain Rider

You relish any trip that involves high country open meadows, boondocking – and deep snow (or extremely deep snow) is the icing on the cake. Your ride makes your pulse a force of nature.

For you, snow makes riding better.

- Deep powder snow with a light track for maximum traction and flotation
- High-altitude terrain
- Steep slopes

Where do you fit in? Is speed a priority? Maybe you really want shorter acceleration and stopping distances. And what kind of handling do you want—nailed to the trail, or loose so you can slide the tail of the sled? Are you a racer? Or do you use your machine for work? Whatever your style, Camoplast has the right track for peak performance **your way.**

Choose the Right Track for Your Style

With **over 150 models to choose from**, Camoplast has one to help you make the most out of winter. There are four main considerations when choosing a track to restore or upgrade your sled's performance: length, width, drive pitch, and lug height. And stud type is also important if you ride on icy terrain. If you're looking for a real performance track, our Single-ply models have lots to offer.



The 4 Keys to Track Selection

Length

is the inside circumference of the track, and is calculated as the drive pitch (see below) times the number of track segments. It must be correct to the nearest inch for proper fit without additional modifications to the skid frame.*

- **Shorter tracks generally provide better handling**
- **Longer tracks generally provide better ride quality and better flotation**

*Aftermarket parts are available for mods when needed

Width

is the measurement across the track and is governed by the width of the tunnel

- **A slightly narrower track is permissible, like a 15-inch track in place of a 16-inch track, but not necessarily the other way around.**
- **Narrower tracks reduce weight for better acceleration and top speed**
- **Wider tracks provide better flotation in soft, deep snow**

Drive Pitch

is the drive cog center distance around the circumference of the cogs on the drive axle. It must match the existing track or the drive cogs must be changed.

Common drive pitches include*

- **2.52" for good all-around performance, primarily on older machines manufactured before 2007**
- **2.86" for good all-around performance with less weight, especially on more recent models manufactured after 2007**
- **3.0" for the lowest possible weight on select mountain sleds**

*Some other drive pitches are also found on older models.

Lug Height*

is the distance the lugs extend above the track surface. More lug height equals better traction—as little as a quarter inch of extra height can make a substantial difference in acceleration and braking. And newer lug designs can improve side bite and reduce fishtailing for better stability.

*Check for adequate clearance before going to a taller lug track.



Let Camoplast Technologies Revive Your Ride

When it comes to traction and control on icy surfaces, nothing beats the ability to bite and grip like metal track studs.

Tackle ice with confidence with pre-studded **ICE Technology** tracks or pre-holed **TRACKtion Control System** tracks.



ICE Technology Tracks | ▲

Why choose an ICE Technology track over a track with conventional studs?

- Eliminates the costly and tedious job of installing at home
- Provides performance that compares with conventional studs but only adds 1 lb to the total weight of the track

Why choose an ICE Technology track over a track without studs?

- Speed: An ICE Technology track goes from 0-120 km/h in 12 seconds while a track without studs only reaches 36 km/h in the same time
- Braking: An ICE Technology track travelling at 120 km/h stops in 9 seconds, while a track without studs takes almost twice as long, at 15 seconds.

Only Camoplast **ICE Technology** tracks are pre-studded at the factory with our proprietary “sharp tip” lug studs.

Benefits

Performance

- Boost rider confidence
- Gain traction and control on ice and hardpack snow
- Reduce stopping distances on ice or hardpack snow
- Reduce track spin on icy hills
- Control track side slip for better control on icy corners
- Improve gas mileage

Convenience

- Eliminate stud installation time and trouble
- No maintenance required

Savings

- Cost less than a standard track with conventional studs
- No stud installation or maintenance costs





Pre-holed
TRACKtion
Control
System™

TRACKtion Control System™ | ●

Prefer a more traditional approach to studding? Our pre-holed TRACKtion Control System™ models are a great choice for a variety of trail sled applications. Produced specifically for use with conventional track studs, Camoplast TRACKtion Control System™ tracks are precision-engineered to maximize stud performance.

Benefits

Convenience

- No drilling necessary, with quick, easy stud installation

Durability

- Track belting is enhanced and properly punched for studding

Effectiveness

- Featuring stud patterns developed by the industry's leading traction manufacturer

Warranty

Camoplast TRACKtion Control™ System tracks are covered by a one-year limited warranty from Camoplast, with the studs and related hardware covered by the stud manufacturer's warranty protection.

Camoplast Single-ply Tracks | ■

Want the very best performance money can buy?

Give your sled the latest technology, a Camoplast Single-ply track. These lightweight Single-ply tracks are the latest innovation in snowmobile propulsion, featuring a weight-optimized design developed and field-tested by our engineers so you can power your performance to new heights!

Benefits

- Lower internal friction means you use less engine power
- Reduced rolling resistance
- Cooler running results in longer track life
- Improved top speed and fuel economy

Features

- Our regular top-quality materials and proprietary rubber compounds
- Optimized construction for a thinner, easier-turning track

Due to their structure, Single-ply tracks require a specific track stud design with a larger head for stud retention if aftermarket traction is installed on them. These studs are readily available from most leading traction manufacturers. Refer to the Camoplast warranty policy statement to determine warranty coverage on studding tracks.

Advanced technology Single-ply tracks reduce weight and improve performance



Not Sure What Your Riding Style is?

Two Tools to Help you Choose

With over 150 models to choose from, there are two ways to find the right track for your needs:

Our Brochure

Find the section that matches your riding style and select the track with the dimensions and specs that fit your requirements. For expert advice, ask your Camoplast technician for help.

Our Track Selector Tool

The easiest way to choose the track for the way you ride! Visit camoplastsolideal.com/selectorsnow

Trails

On-Trail Aggressive or Power Riders or Cruisers

Tame the trails, whatever they bring

Aggressive riders live for the adrenaline rush of gut-wrenching traction that slingshots them around corners and bashes moguls. **Power riders** feel the need for speed: pure acceleration across lake trails and endless straightaways. **Cruisers** seek smooth handling for big-mile efficiency touring groomed trails all day long.

If you're a trail rider, Camoplast has the track to fit your style.



ICE Attak XT

This 2012-released model featuring ICE Technology has even better traction than the flagship ICE Ripper XT model. Featuring an optimized rubber compound gives aggressive riders the confidence that they can count on extreme traction for accelerating and braking on the trail.

- **Factory pre-studded for improved traction and control**
- **Lug design delivers better traction than the ICE Ripper XT**
- **1.22" lug height provides better handling and stability**
- **Optimized rubber compound for superior traction on groomed trails**



Model
9190H



MODEL	DIMENSIONS	LUG HEIGHT	WEIGHT	DRIVE PITCH	CLIP CONFIG.	
9190H	15" x 120" (38 cm x 305 cm)	1.22" (31 mm)	37 lb. (17 kg)	2.86" (73 mm)	Full	▲ ■
9191H	15" x 137" (38 cm x 348 cm)	1.22" (31 mm)	42 lb. (19 kg)	2.86" (73 mm)	Full	▲ ■
9200H	15" x 121" (38 cm x 307 cm)	1.22" (31 mm)	40 lb. (18 kg)	2.52" (64 mm)	Full	▲ ■
9201H	15" x 128" (38 cm x 325 cm)	1.22" (31 mm)	42 lb. (19 kg)	2.52" (64 mm)	Full	▲ ■
9202H	15" x 136" (38 cm x 345 cm)	1.22" (31 mm)	45 lb. (20 kg)	2.52" (64 mm)	Full	▲ ■
9203H	15" x 144" (38 cm x 365 cm)	1.22" (31 mm)	47 lb. (21 kg)	2.52" (64 mm)	Full	▲ ■
9236H	15" x 129" (38 cm x 328 cm)	1.22" (31 mm)	39 lb. (18 kg)	2.86" (73 mm)	Full	▲ ■

- ▲ Camoplast tracks equipped with ICE Technology
- Single-ply Camoplast tracks
- Camoplast tracks equipped with TRACKtion Control System™

ICE Attak

This 1" lug ICE Technology design is popular with trail cruisers and has proved itself time again since its launch in 2006. Often purchased at replacement time or as an upgrade, it's an excellent choice for snowmobiles that cannot fit taller tracks. Its bullet-proof design delivers outstanding top speed and handling on hard-packed snow.

- **Factory pre-studded with aggressive 31-point stud pattern**
- **HackSaw-based lug design for good top speed and handling on hard-packed snow**
- **1.063" lug height for average trail use and good speed**
- **1.375" lug height for mixed on/off-trail use**



MODEL	DIMENSIONS	LUG HEIGHT	WEIGHT	DRIVE PITCH	CLIP CONFIG.
9028H	15" x 121" (38 cm x 307 cm)	1.063" (27 mm)	38 lb. (17 kg)	2.52" (64 mm)	Full
9029H	15" x 136" (38 cm x 345 cm)	1.063" (27 mm)	43 lb. (19.5 kg)	2.52" (64 mm)	Full
9037H	15" x 128" (38 cm x 325 cm)	1.063" (27 mm)	40 lb. (18 kg)	2.52" (64 mm)	Full
9106H	15" x 144" (38 cm x 366 cm)	1.063" (27 mm)	45 lb. (20 kg)	2.52" (64 mm)	Full
9134H	16" x 137" (38 cm x 348 cm)	1.375" (35 mm)	49 lb. (22 kg)	2.86" (73 mm)	Full

- ▲ Camoplast tracks equipped with ICE Technology
- Single-ply Camoplast tracks
- Camoplast tracks equipped with TRACKtion Control System™

ICE Ripper XT

The original ICE Technology factory pre-studded track—a proven performer. This flagship product was one of our first models to feature ICE Technology, with a design that keeps riders nailed to the trail with outstanding handling and stability.

- **Factory pre-studded for improved traction and control**
- **1.25" lug height for improved traction and stability**
- **RipSaw-based attack angled lugs for excellent forward and lateral bite**



MODEL	DIMENSIONS	LUG HEIGHT	WEIGHT	DRIVE PITCH	CLIP CONFIG.
9077H	15" x 121" (38 cm x 307 cm)	1.25" (32 mm)	39 lb. (18 kg)	2.52" (64 mm)	Full
9079H	15" x 136" (38 cm x 345 cm)	1.25" (32 mm)	44 lb. (20 kg)	2.52" (64 mm)	Full
9164H	15" x 120" (38 cm x 305 cm)	1.25" (32 mm)	36 lb. (16 kg)	2.86" (73 mm)	Full

- ▲ Camoplast tracks equipped with ICE Technology
- Single-ply Camoplast tracks
- Camoplast tracks equipped with TRACKtion Control System™

RipSaw II

This versatile track is an all-around performer in all types of snow, with a design that combines the best of RipSaw and Cobra models to deliver stellar results in a wide variety of trail conditions. The RipSaw II has been designed to reduce side bite when cornering, in comparison to the original RipSaw.

- **Tapered outside lug edges for less side-bite when cornering**
- **Sharp angled lugs for excellent bite on hard-pack snow**
- **Cupped center and full outer lugs for traction on loose, less compacted snow**
- **Lug design generates less noise for improved rider comfort on hard-packed groomed trails**



Model 9156H

RipSaw

One of the best trail tracks ever offered and still a bestseller today, with rigid, hard-wearing lugs for mile after mile of dependable use. A wide range of sizes fits many different snowmobiles. This is the benchmark model for high performance trail tracks, with excellent durability and traction on groomed or hard-packed snow.

- **Rigid lugs provide superior handling, acceleration, and braking on groomed trails**
- **Narrow lug base for reduced rolling resistance and maximum top speed**
- **Angled profiles for aggressive forward and lateral bite**



Models 9968H144 & 9969H162 TRACKtion Control™

MODEL	DIMENSIONS	LUG HEIGHT	WEIGHT	DRIVE PITCH	CLIP CONFIG.
9156H	15" x 120" (38 cm x 305 cm)	1.25" (32 mm)	36 lb. (16 kg)	2.86" (73 mm)	Full
9158H	15" x 120" (38 cm x 305 cm)	1" (25 mm)	32 lb. (15 kg)	2.86" (73 mm)	Full
9214H	15" x 121" (38 cm x 307 cm)	1.25" (32 mm)	41 lb. (19 kg)	2.52" (64 mm)	Full
9215H	15" x 128" (38 cm x 325 cm)	1.25" (32 mm)	43 lb. (19.5 kg)	2.52" (64 mm)	Full
9216H	15" x 136" (38 cm x 345 cm)	1.25" (32 mm)	45 lb. (20 kg)	2.52" (64 mm)	Full
9223H	15" x 137" (38 cm x 345 cm)	1.25" (32 mm)	42 lb. (19 kg)	2.86" (73 mm)	Full
9224H	15" x 137" (38 cm x 345 cm)	1" (25 mm)	38 lb. (17 kg)	2.86" (73 mm)	Full
9237H	15" x 129" (38 cm x 328 cm)	1.25" (32 mm)	39 lb. (18 kg)	2.86" (73 mm)	Full
9209H	15" x 120" (38 cm x 305 cm)	1.25" (32 mm)	37 lb. (17 kg)	2.86" (73 mm)	Full
9210H	15" x 120" (38 cm x 305 cm)	1" (25 mm)	33 lb. (15 kg)	2.86" (73 mm)	Full

- ▲ Camoplast tracks equipped with ICE Technology
- Single-ply Camoplast tracks
- Camoplast tracks equipped with TRACKtion Control System™

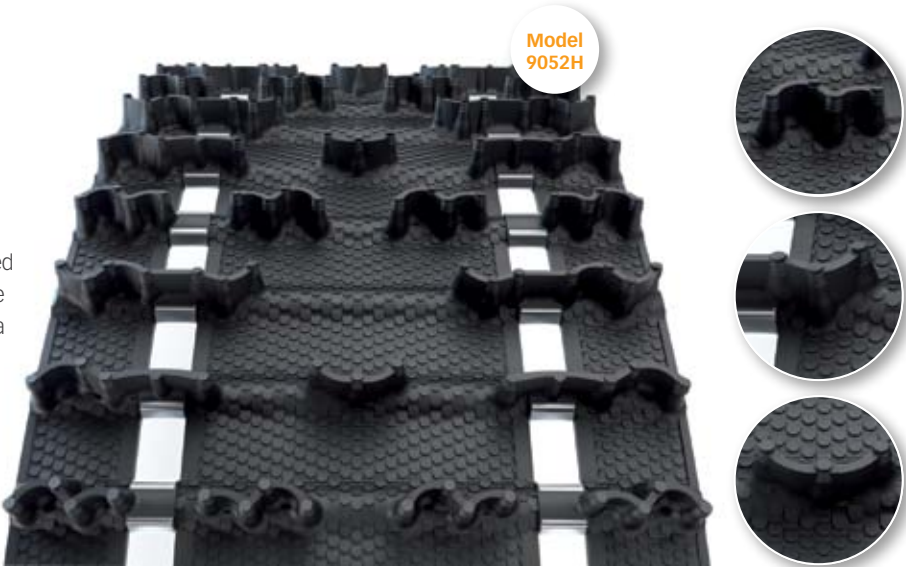
MODEL	DIMENSIONS	LUG HEIGHT	WEIGHT	DRIVE PITCH	CLIP CONFIG.
9001H	13.5" x 128" (34 cm x 325 cm)	1.25" (32 mm)	34 lb. (16 kg)	2.52" (64 mm)	Every 3rd / closed windows
9040H	15" x 128" (38 cm x 325 cm)	1.25" (32 mm)	41 lb. (19 kg)	2.52" (64 mm)	Full
9146H	15" x 121" (38 cm x 307 cm)	1.25" (32 mm)	35 lb. (16 kg)	2.52" (64 mm)	Every 3rd / open windows
9148H	15" x 120" (38 cm x 305 cm)	1" (25 mm)	32 lb. (15 kg)	2.86" (73 mm)	Full
9149H	15" x 120" (38 cm x 305 cm)	1.25" (32 mm)	34 lb. (16 kg)	2.86" (73 mm)	Full
9968H	15" x 121" (38 cm x 307 cm)	1.25" (32 mm)	38 lb. (17 kg)	2.52" (64 mm)	Full
9968H144	15" x 121" (38 cm x 307 cm)	1.25" (32 mm)	38 lb. (17 kg)	2.52" (64 mm)	Full
9969H	15" x 136" (38 cm x 345 cm)	1.25" (32 mm)	43 lb. (19.5 kg)	2.52" (64 mm)	Full
9969H162	15" x 136" (38 cm x 345 cm)	1.25" (32 mm)	43 lb. (19.5 kg)	2.52" (64 mm)	Full

- ▲ Camoplast tracks equipped with ICE Technology
- Single-ply Camoplast tracks
- Camoplast tracks equipped with TRACKtion Control System™

Cobra

Excellent performance on the soft, loose snow of ungroomed trails. The Cobra's softer lugs provide less side bite and noise than the RipSaw model. Featuring unique traction teeth for a better grip on hard-packed snow surfaces.

- Cupped lugs for superior acceleration and braking in loose soft snow conditions
- Flexible lug design for superior off-trail performance
- Softer, thinner lugs generates less noise for improved rider comfort



MODEL	DIMENSIONS	LUG HEIGHT	WEIGHT	DRIVE PITCH	CLIP CONFIG.
9052H	15" x 121" (38 cm x 307 cm)	1.352" (34 mm)	37 lb. (17 kg)	2.52" (64 mm)	Full
9061H	15" x 136" (38 cm x 345 cm)	1.352" (34 mm)	42 lb. (19 kg)	2.52" (64 mm)	Full
9081H	15" x 128" (38 cm x 325 cm)	1.352" (34 mm)	40 lb. (18 kg)	2.52" (64 mm)	Full
9092H	15" x 120" (38 cm x 305 cm)	1.352" (34 mm)	33 lb. (15 kg)	2.86" (73 mm)	Full
9093H	15" x 137" (38 cm x 348 cm)	1.352" (34 mm)	38 lb. (17 kg)	2.86" (73 mm)	Full
9094H	15" x 146" (38 cm x 371 cm)	1.352" (34 mm)	40 lb. (18 kg)	2.86" (73 mm)	Full
9107H	15" x 144" (38 cm x 366 cm)	1.352" (34 mm)	44 lb. (20 kg)	2.52" (64 mm)	Full
9114H	16" x 137" (41 cm x 348 cm)	1.352" (34 mm)	40 lb. (18 kg)	2.86" (73 mm)	Full
9235H	15" x 129" (38 cm x 328 cm)	1.352" (34 mm)	36 lb. (16 kg)	2.86" (73 mm)	Full

- ▲ Camoplast tracks equipped with ICE Technology
- Single-ply Camoplast tracks
- Camoplast tracks equipped with TRACKtion Control System™

HackSaw

A proven performer in the 1" category with similar characteristics to the RipSaw—including attack angle lugs for superior performance on hard groomed snow trails. Designed for bulletproof durability, combined with efficiency and speed.

- 1" lug height for low rolling resistance that improves fuel economy
- Crescent lug features recessed tips and cutting edges for forward and lateral bite on hardpack
- Hard-wearing rigid lugs for mile after mile of dependable use
- Narrow lug base to reduce rolling resistance and maximize top speed



MODEL	DIMENSIONS	LUG HEIGHT	WEIGHT	DRIVE PITCH	CLIP CONFIG.
9009H	15" x 121" (38 cm x 307 cm)	1" (25 mm)	33 lb. (15 kg)	2.52" (64 mm)	Every 3rd / open windows
9010H	15" x 136" (38 cm x 345 cm)	1" (25 mm)	38 lb. (17 kg)	2.52" (64 mm)	Full
9027H ¹	14" x 121" (36 cm x 307 cm)	1" (25 mm)	32 lb. (15 kg)	2.52" (64 mm)	Full
9043H144	15" x 121" (38 cm x 307 cm)	1" (25 mm)	36 lb. (16 kg)	2.52" (64 mm)	Full
9110H ¹	14" x 128" (36 cm x 325 cm)	1" (25 mm)	34 lb. (16 kg)	2.52" (64 mm)	Full
9147H	15" x 121" (38 cm x 307 cm)	1" (25 mm)	32 lb. (15 kg)	2.52" (64 mm)	Every 3rd / open windows
9160H ¹	14" x 144" (36 cm x 366 cm)	1" (25 mm)	38 lb. (17 kg)	2.52" (64 mm)	Full
9234H	15" x 128" (38 cm x 325 cm)	1" (25 mm)	35 lb. (16 kg)	2.52" (64 mm)	Every 3rd / open windows
9960H ¹	13.5" x 128" (34 cm x 325 cm)	1" (25 mm)	32 lb. (15 kg)	2.52" (64 mm)	Every 3rd / closed windows

¹ Narrow track design

- ▲ Camoplast tracks equipped with ICE Technology
- Single-ply Camoplast tracks
- Camoplast tracks equipped with TRACKtion Control System™

Cross-Country

50/50 and Backcountry Riders

Boost your crossover or trail sled

50/50 riders rack up the trail miles, but give them half a chance and they're off the trail, playing in an open untracked meadow or riding a ditch line. Backcountry riders don't need any second invitations to head out into untraveled pristine powder and deep snow.

If you ride out into the wilds, you need a Camoplast Cross-Country track.



NEW BackCountry X2

We've taken the design of the BackCountry – our most popular on/off-trail track – to another level to create the ideal track for on/off-trail riding, now with a lug height of 2" that lets you explore deep into the backcountry.

- Arched lug design with staggered snocross-inspired pattern for excellent soft snow traction
- Rigid lug support columns and optimized rubber compound to deliver great on/off-trail performance
- 2.86" drive pitch



MODEL	DIMENSIONS	LUG HEIGHT	WEIGHT	DRIVE PITCH	CLIP CONFIG.		
9256C	15" x 120" (38 cm x 305 cm)	2" (51 mm)	41 lb. (19 kg)	2.86" (73 mm)	Full	■	▲ Camoplast tracks equipped with ICE Technology
9257C	15"x 129" (38 cm x 328 cm)	2" (51 mm)	43 lb. (19.5 kg)	2.86" (73 mm)	Full	■	■ Single-ply Camoplast tracks
9258C	15" X137" (38 cm X 348 cm)	2" (51 mm)	46 lb. (21 kg)	2.86" (73 mm)	Full	■	● Camoplast tracks equipped with TRACKtion Control System™



NEW ICE Cobra 1.6
Our Denis Courtemanche Special Edition

This recently launched Cobra track featuring ICE Technology has been named the “Denis Courtemanche Special Edition,” in honor of the longtime Camoplast recreational products director and former Bombardier employee who has devoted 50 years to improving snowmobile track design.

- **Factory pre-studded ICE Technology with the optimal lug height for the on/off-trail riding**
- **Cupped lugs for superior acceleration and braking in loose soft snow conditions**
- **Flexible lug design for superior off-trail performance**



MODEL	DIMENSIONS	LUG HEIGHT	WEIGHT	DRIVE PITCH	CLIP CONFIG.
9244C	15" x 120" (38 cm x 305 cm)	1.6" (43 mm)	38 lb. (17 kg)	2.86" (73 mm)	Full
9245C	15" x 129" (38 cm x 328 cm)	1.6" (43 mm)	41 lb. (19 kg)	2.86" (73 mm)	Full
9246C	15" x 137" (38 cm x 348 cm)	1.6" (43 mm)	43 lb. (19.5 kg)	2.86" (73 mm)	Full
9249C	16" x 137" (41 cm x 348 cm)	1.6" (43 mm)	45 lb. (20 kg)	2.86" (73 mm)	Full

- ▲ Camoplast tracks equipped with ICE Technology
- Single-ply Camoplast tracks
- Camoplast tracks equipped with TRACKtion Control System™

NEW Cobra 1.6

We've taken the Cobra design, known for excellent performance on the soft, loose snow of ungroomed trails, to another level now available in a 1.6" lug height for even better traction and performance for on/off trail riding.

- **Cupped lugs for superior acceleration and braking in loose soft snow conditions**
- **Flexible lug design for superior off-trail performance**
- **Designed for ICE Technology, select lugs more rigid for traction on hard-packed snow performance**



MODEL	DIMENSIONS	LUG HEIGHT	WEIGHT	DRIVE PITCH	CLIP CONFIG.
9262C	15" x 120" (38 cm x 305 cm)	1.6" (43 mm)	38 lb. (17 kg)	2.86" (73 mm)	Full
9263C	15" x 129" (38 cm x 328 cm)	1.6" (43 mm)	40 lb. (18 kg)	2.86" (73 mm)	Full
9264C	15" x 137" (38 cm x 348 cm)	1.6" (43 mm)	43 lb. (19.5 kg)	2.86" (73 mm)	Full
9265C	16" x 137" (41 cm x 348 cm)	1.6" (43 mm)	45 lb. (20 kg)	2.86" (73 mm)	Full

- ▲ Camoplast tracks equipped with ICE Technology
- Single-ply Camoplast tracks
- Camoplast tracks equipped with TRACKtion Control System™

BackCountry X & BackCountry

The popularity of on/off-trail riding is growing and the BackCountry track is recognized as one of the best options for this riding style in 1.75" lug height. Developed and tested in competition snocross racing, this design is proven for traction and durability.

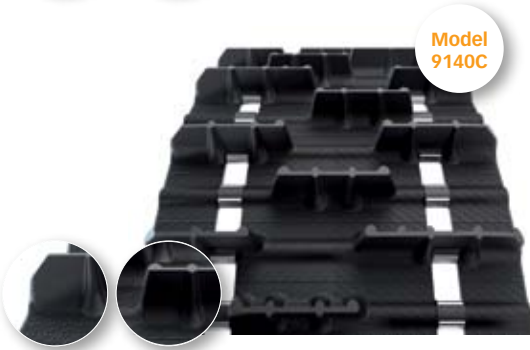
- **Arched lug design with staggered snocross-inspired pattern for excellent soft snow traction**
- **Rigid lug support columns and optimized rubber compound to deliver great on/off-trail performance**
- **2.52" drive pitch for BackCountry, 2.86" drive pitch for BackCountry X**
- **Now available in 3" drive pitch for BackCountry X**

BackCountry X

MODEL	DIMENSIONS	LUG HEIGHT	WEIGHT	DRIVE PITCH	CLIP CONFIG.
9125C	15" x 120" (38 cm x 305 cm)	1.75" (44 mm)	39 lb. (18 kg)	2.86" (73 mm)	Full
9126C	15" x 137" (38 cm x 345 cm)	1.75" (44 mm)	45 lb. (20 kg)	2.86" (73 mm)	Full
9254C	15" x 141" (38 cm x 382 cm)	1.75" (44 mm)	43 lb. (19.5 kg)	3" (76 mm)	Full

BackCountry

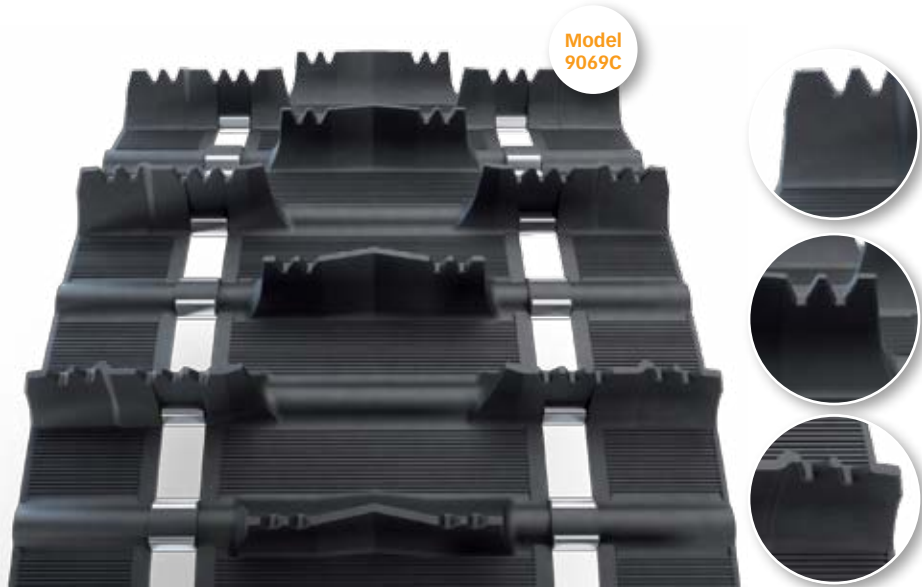
MODEL	DIMENSIONS	LUG HEIGHT	WEIGHT	DRIVE PITCH	CLIP CONFIG.
9140C	15" x 121" (38 cm x 307 cm)	1.75" (44 mm)	40 lb. (18 kg)	2.52" (64 mm)	Full
9141C	15" x 128" (38 cm x 325 cm)	1.75" (44 mm)	42 lb. (19 kg)	2.52" (64 mm)	Full
9142C	15" x 136" (38 cm x 345 cm)	1.75" (44 mm)	44 lb. (20 kg)	2.52" (64 mm)	Full
9143C	15" x 144" (38 cm x 366 cm)	1.75" (44 mm)	46 lb. (21 kg)	2.52" (64 mm)	Full



Challenger Trail

The Challenger has been the go-to track for outstanding deep-snow performance since the mid-90s. The Challenger Trail is an all-around performer inspired by our Challenger mountain track. Originally offered in a 2" lug height, this versatile and durable trail track delivers off-trail capability without sacrificing trail performance.

- **Saw-tooth tipped lugs provide excellent handling, acceleration, and braking on packed trails**
- **16" width enhances flotation off-trail in soft snow**



MODEL	DIMENSIONS	LUG HEIGHT	WEIGHT	DRIVE PITCH	CLIP CONFIG.
9069C	16" x 120" (41 cm x 305 cm)	1.75" (44 mm)	39 lb. (18 kg)	2.86" (73 mm)	Full
9070C	16" x 137" (41 cm x 348 cm)	1.75" (44 mm)	45 lb. (20 kg)	2.86" (73 mm)	Full
9167C	16" x 146" (41 cm x 371 cm)	1.75" (44 mm)	48 lb. (22 kg)	2.86" (73 mm)	Full
9933C	16" x 136" (41 cm x 345 cm)	1.75" (44 mm)	48 lb. (22 kg)	2.52" (64 mm)	Full

- ▲ Camoplast tracks equipped with ICE Technology
- Single-ply Camoplast tracks
- Camoplast tracks equipped with TRACKtion Control System™

CrossOver

A popular 1.5" lug height track model for upgrading a range of segments including utility, touring and on/off-trail riding styles. The aggressive traction is perfect for crossover riders who prefer on-trail riding.

- Angled lugs offer outstanding forward and lateral bite on groomed trails
- Stepped lug design for greater flex and improved traction in soft, loose snow
- Available in longer lengths (144", 151", & 159") for conversion of mountain designed snowmobiles for on/off-trail riding



MODEL	DIMENSIONS	LUG HEIGHT	WEIGHT	DRIVE PITCH	CLIP CONFIG.
9003C	15" x 144" (38 cm x 366 cm)	1.5" (38 mm)	50 lb. (23 kg)	2.52" (64 mm)	Full
9004C	15" x 151" (38 cm x 384 cm)	1.5" (38 mm)	52 lb. (24 kg)	2.52" (64 mm)	Full
9005C	15" x 159" (38 cm x 404 cm)	1.5" (38 mm)	51 lb. (23 kg)	2.52" (64 mm)	Every 3rd / open windows

Intense

A long-time favorite featuring a 1.5" lug height for on/off-trail riders with a proven record of performance and durability. This track is an excellent performer in all types of snow conditions.

- Saw-tooth tipped lugs provide excellent handling, acceleration, and braking on packed trails
- V-shaped and full lugs for excellent traction in soft, loose snow



MODEL	DIMENSIONS	LUG HEIGHT	WEIGHT	DRIVE PITCH	CLIP CONFIG.
9108C	15" x 136" (38 cm x 345 cm)	1.5" (38 mm)	41 lb. (19 kg)	2.52" (64 mm)	Full
9930C	15" x 121" (38 cm x 307 cm)	1.5" (38 mm)	39 lb. (18 kg)	2.52" (64 mm)	Full

Mountain

Deep Snow and Extreme Riders

Heading up where few dare to go

Deep snow mountain riders thrive on exploring the high country's open fields and boondocking through virgin forests. **Deep snow extreme riders** push themselves and their sled to the limit on bottomless snow and the steepest chutes.

If you ride in extreme conditions you need the traction and flotation of a Camoplast mountain track.



Challenger X3

+ **NEW** 174" and 156" tracks

Challenger X3 is based on our successful Challenger design, with 3" lugs, the tallest on the market. For mountain riders craving performance in extreme powder or boondocking through the trees, this deep snow technical track provides an efficient and light ride.

- Single-ply construction, 3" drive pitch and advanced molding technology make it the lightest in its category
- Lug geometry and support columns allow lug cup and flex action for unmatched flotation
- NEW! 174" and 156" models now available



MODEL	DIMENSIONS	LUG HEIGHT	WEIGHT	DRIVE PITCH	CLIP CONFIG.
9219M	16" x 162" (41 cm x 412 cm)	3" (76 mm)	61 lb. (28 kg)	3" (76 mm)	Full
9220M	15" x 162" (38 cm x 412 cm)	3" (76 mm)	58 lb. (26 kg)	3" (76 mm)	Full
9270M	15" x 156" (38 cm x 396 cm)	3" (76 mm)	56 lb. (25 kg)	3" (76 mm)	Full
9271M	15" x 174" (38 cm x 442 cm)	3" (76 mm)	63 lb. (29 kg)	3" (76 mm)	Full

- ▲ Camoplast tracks equipped with ICE Technology
- Single-ply Camoplast tracks
- Camoplast tracks equipped with TRACKtion Control System™

Challenger

Since its inception in the early 90s, Challenger has been the benchmark deep lug track for mountain riding in deep snow. A versatile and reliable design you can always count on that delivers outstanding all-around performance in a wide range of mountain riding conditions.

- 2" and 2.313" lugs heights for traction in deep snow
- Saw-tooth design provides versatility with grip and control on hard snow
- 15" and 16" track width available



MODEL	DIMENSIONS	LUG HEIGHT	WEIGHT	DRIVE PITCH	CLIP CONFIG.
9064M	16" x 146" (41 cm x 371 cm)	2.313" (59 mm)	53 lb. (24 kg)	2.86" (73 mm)	Full
9065M	16" x 154" (41 cm x 391 cm)	2.313" (59 mm)	55 lb. (25 kg)	2.86" (73 mm)	Full
9186M	16" x 137" (41 cm x 348 cm)	2" (51 mm)	49 lb. (22 kg)	2.86" (73 mm)	Full
9187M	16" x 146" (41 cm x 371 cm)	2" (51 mm)	51 lb. (23 kg)	2.86" (73 mm)	Full
9188M	16" x 154" (41 cm x 391 cm)	2" (51 mm)	53 lb. (24 kg)	2.86" (73 mm)	Full
9204M	16" x 137" (41 cm x 348 cm)	2.313" (59 mm)	51 lb. (23 kg)	2.86" (73 mm)	Full
9797M	15" x 136" (38 cm x 345 cm)	2" (51 mm)	51 lb. (23 kg)	2.52" (64 mm)	Full
9798M	15" x 121" (38 cm x 307 cm)	2" (51 mm)	45 lb. (20 kg)	2.52" (64 mm)	Full
9875M	15" x 144" (38 cm x 366 cm)	2" (51 mm)	53 lb. (24 kg)	2.52" (64 mm)	Full
9876M	15" x 151" (38 cm x 383 cm)	2" (51 mm)	55 lb. (25 kg)	2.52" (64 mm)	Full

- ▲ Camoplast tracks equipped with ICE Technology
- Single-ply Camoplast tracks
- Camoplast tracks equipped with TRACKion Control System™

Challenger Extreme

The Challenger Extreme is built from the same DNA as our classic Challenger design, but with even higher lugs—up to 3"—that make boondocking bottomless powder and climbing the steepest chutes look easy.

- Single-ply construction and advanced molding technology make it the lightest in its category
- Lug geometry and support columns allow lug cup and flex action for unmatched flotation
- Available in a full range of lengths up to 174" to fit all popular snowmobiles

SAW-TOOTH LUG DESIGN FOR VERSATILITY IN ALL SNOW TYPES

MODEL	DIMENSIONS	LUG HEIGHT	WEIGHT	DRIVE PITCH	CLIP CONFIG.
9035M	15" x 174" (38 cm x 442 cm)	2.5" (64 mm)	63 lb. (29 kg)	3" (76 mm)	Full
9036M	16" x 174" (41 cm x 442 cm)	2.5" (64 mm)	67 lb. (30 kg)	3" (76 mm)	Full
9102M	16" x 154" (41 cm x 391 cm)	2.5" (64 mm)	59 lb. (27 kg)	2.86" (73 mm)	Full
9103M	16" x 163" (41 cm x 414 cm)	2.5" (64 mm)	61 lb. (28 kg)	2.86" (73 mm)	Full
9104M ¹	15" x 154" (38 cm x 391 cm)	2.5" (64 mm)	55 lb. (25 kg)	2.86" (73 mm)	Full
9105M ¹	15" x 163" (38 cm x 414 cm)	2.5" (64 mm)	57 lb. (26 kg)	2.86" (73 mm)	Full
9115M	16" x 174" (41 cm x 442 cm)	3" (76 mm)	75 lb. (34 kg)	3" (76 mm)	Full
9144M	16" x 146" (41 cm x 371 cm)	2.5" (64 mm)	56 lb. (25 kg)	2.86" (73 mm)	Full
9145M ¹	15" x 146" (38 cm x 371 cm)	2.5" (64 mm)	52 lb. (24 kg)	2.86" (73 mm)	Full
9225M	16" x 156" (41 cm x 396 cm)	3" (76 mm)	68 lb. (31 kg)	3" (76 mm)	Full

FULL CUPPED LUG DESIGN FOR POWDER SNOW TYPES

MODEL	DIMENSIONS	LUG HEIGHT	WEIGHT	DRIVE PITCH	CLIP CONFIG.
9174M	15" x 153" (38 cm x 389 cm)	2.5" (64 mm)	57 lb. (26 kg)	3" (76 mm)	Full
9175M	15" x 162" (38 cm x 412 cm)	2.5" (64 mm)	55 lb. (25 kg)	3" (76 mm)	Full
9176M	16" x 162" (41 cm x 412 cm)	2.5" (64 mm)	57 lb. (26 kg)	3" (76 mm)	Full

¹ These track models feature center hole for third driver



Peak 2.5

This technical track features angular lugs with 2.5" lug height. Available in soft and hard lug versions for more adaptability across a variety of snow conditions.

- Angular lugs bite big and funnel snow under snowmobile for outstanding flotation
- Available with soft lugs for powder snow and hard lugs for heavy/wet snow types
- Outer lug bars deliver better lateral control for improved handling



HARD LUGS FOR HEAVY AND WET SNOW TYPES

MODEL	DIMENSIONS	LUG HEIGHT	WEIGHT	DRIVE PITCH	CLIP CONFIG.
9177M	16" x 163" (41 cm x 414 cm)	2.5" (64 mm)	63 lb. (29 kg)	2.86" (73 mm)	Full
9178M	16" x 154" (41 cm x 392 cm)	2.5" (64 mm)	60 lb. (27 kg)	2.86" (73 mm)	Full
9179M	16" x 146" (41 cm x 371 cm)	2.5" (64 mm)	56 lb. (25 kg)	2.86" (73 mm)	Full
9180M ¹	15" x 163" (38 cm x 414 cm)	2.5" (64 mm)	59 lb. (27 kg)	2.86" (73 mm)	Full
9181M ¹	15" x 154" (38 cm x 392 cm)	2.5" (64 mm)	56 lb. (25 kg)	2.86" (73 mm)	Full
9182M ¹	15" x 146" (38 cm x 371 cm)	2.5" (64 mm)	53 lb. (24 kg)	2.86" (73 mm)	Full

SOFTER LUGS AT THE TIP AND STIFF BASE FOR POWDER SNOW TYPES

MODEL	DIMENSIONS	LUG HEIGHT	WEIGHT	DRIVE PITCH	CLIP CONFIG.
9230M ¹	15" x 154" (38 cm x 392 cm)	2.5" (64 mm)	56 lb. (25 kg)	2.86" (73 mm)	Full
9231M ¹	15" x 163" (38 cm x 414 cm)	2.5" (64 mm)	59 lb. (27 kg)	2.86" (73 mm)	Full
9232M	16" x 154" (41 cm x 392 cm)	2.5" (64 mm)	60 lb. (27 kg)	2.86" (73 mm)	Full
9233M	16" x 163" (41 cm x 414 cm)	2.5" (64 mm)	63 lb. (29 kg)	2.86" (73 mm)	Full

¹ These track models feature center hole for third driver

- ▲ Camoplast tracks equipped with ICE Technology
- Single-ply Camoplast tracks
- Camoplast tracks equipped with TRACKtion Control System™

“

Improved traction, consistent track speed, and improved flotation—to go where others can’t—are all part of a top-performing track. And that’s what keeps me ahead of the competition!

Dan Adams,
Owner/Instructor,
Next Level Riding Clinics

”





Utility

Hard-working Riders

Working on snow, day after day

Work utility riders have a job to do and require a track they can depend on. Deep snow utility riders need the confidence that they can go anywhere, anytime, in demanding and unpredictable conditions. If a job's worth doing, do it on a Camoplast utility track.

NEW Cobra SWT

This new track features the same durable, high-performance design as the Cobra WT, but with an even wider track for 24" wide snowmobiles. A welcome addition for utility users with wide sleds who seek the confidence that comes with Camoplast quality.

- Extra tall 1.5" and 1.75" lugs provide optimal traction
- Cupped lug design ideal in soft, loose snow and for off-trail backcountry exploration
- Lightweight for greater efficiency and improved fuel economy
- Now available in 24" width



MODEL	DIMENSIONS	LUG HEIGHT	WEIGHT	DRIVE PITCH	CLIP CONFIG.		
9260U	24" x 156" (60 cm x 396 cm)	1.75" (44 mm)	86 lb. (39 kg)	2.52" (64 mm)	Full	■	▲ Camoplast tracks equipped with ICE Technology
9261U	24" x 156" (60 cm x 396 cm)	1.5" (38 mm)	84 lb. (38 kg)	2.52" (64 mm)	Full	■	■ Single-ply Camoplast tracks
						●	● Camoplast tracks equipped with TRACKtion Control System™

Cobra WT

This wide-track Cobra design is a star performer with traction to spare in deep and soft, loose snow. Ideal for utility snowmobiles that are often used off-trail, it offers high-performance belting to handle heavier loads without track stretching.

- Extra-high 1.5" and 1.8" lugs for the best possible traction
- Cupped lug design ideal in soft, loose snow and for off-trail backcountry exploration
- Lightweight for greater efficiency and improved fuel economy



MODEL	DIMENSIONS	LUG HEIGHT	WEIGHT	DRIVE PITCH	CLIP CONFIG.
9195U	20" x 154" (50 cm x 392 cm)	1.8" (46 mm)	65 lb. (29 kg)	2.86" (73 mm)	Full
9196U	20" x 154" (50 cm x 392 cm)	1.5" (38 mm)	62 lb. (28 kg)	2.86" (73 mm)	Full

- ▲ Camoplast tracks equipped with ICE Technology
- Single-ply Camoplast tracks
- Camoplast tracks equipped with TRACKtion Control System™

ICE WideTrack

Utility sled users demand unbeatable flotation and superb reliability to handle the toughest jobs. Best for heavy-duty hauling, featuring extra lateral stability and traction, this track is the only model in the category to feature a factory pre-studded ICE Technology option for utility snowmobiles using a 20" wide track.

- Factory pre-studded ICE Technology for improved traction and control
- Finger lug design for superior traction on hard-packed snow
- 1.25" lug height



MODEL	DIMENSIONS	LUG HEIGHT	WEIGHT	DRIVE PITCH	CLIP CONFIG.
9008U	20" x 156" (50 cm x 396 cm)	1.25" (32 mm)	72 lb. (33 kg)	2.52" (64 mm)	Full

- ▲ Camoplast tracks equipped with ICE Technology
- Single-ply Camoplast tracks
- Camoplast tracks equipped with TRACKtion Control System™

RipSaw Full

This utility track uses a modified version of the tried-and-tested RipSaw design for improved traction in soft snow. The durable, full lug design provides excellent traction and features a 1.25" lug height, a popular upgrade for utility vehicles fitted with a 1" lug track for mile after mile of dependable use.

- 1.25" & 1.375" lug heights
- Full block lugs provide traction in soft, loose snow
- Angled lugs for aggressive forward and lateral bite on hard-packed snow



MODEL	DIMENSIONS	LUG HEIGHT	WEIGHT	DRIVE PITCH	CLIP CONFIG.
9002U	20" x 156" (50 cm x 396 cm)	1.25" (32 mm)	68 lb. (31 kg)	2.52" (64 mm)	Full
9089U	20" x 154" (50 cm x 391 cm)	1.375" (35 mm)	66 lb. (30 kg)	2.86" (73 mm)	Full
9151U ¹	20" x 156" (50 cm x 396 cm)	1.25" (32 mm)	68 lb. (31 kg)	2.52" (64 mm)	Full

- ▲ Camoplast tracks equipped with ICE Technology
- Single-ply Camoplast tracks
- Camoplast tracks equipped with TRACKtion Control System™

¹ Features eight rows of internal drive lugs for improved track drive



“

Whether I need to get a job done or just get out and enjoy the great outdoors doing the things I love to do, I trust my Camoplast track to get me there and back.

Dan Locknikar
Long time active snowmobiler and racer
Colorado, USA

”

Racing

Riding to Win

The speed you need to compete with the best

If you are an asphalt, ice & grass drag, snocross, ice oval or snow & hill drag racer, you need tracks that are optimized for racing on competitive courses. When the crowd roars, you know that adrenaline isn't enough to get you across the finish line first.

Suit up and speed away, whatever the surface, with a Camoplast racing track.



SNO X

High-performance designs, custom-tailored for snocross competition, tested and proven by select OE factory race teams. Fitments are available for all types of competition vehicles, with firm lugs made of hard rubber compounds for the best holeshots.

- 1.75" lugs, the choice of professional racers
- Extra hard outside rubber compound for best holeshots
- SR approved for use in mod class



Models
9169R
9189R



MODEL	DIMENSIONS	LUG HEIGHT	WEIGHT	DRIVE PITCH	CLIP CONFIG.
9067R ¹	15" x 121" (38 cm x 307 cm)	1.75" (44 mm)	41 lb. (19 kg)	2.52" (64 mm)	Full
9068R ¹	15" x 128" (38 cm x 325 cm)	1.75" (44 mm)	43 lb. (19.5 kg)	2.52" (64 mm)	Full
9169R	15" x 120" (38 cm x 305 cm)	1.75" (44 mm)	40 lb. (18 kg)	2.86" (73 mm)	Full
9189R	15" x 129" (38 cm x 326 cm)	1.75" (44 mm)	43 lb. (19.5 kg)	2.86" (73 mm)	Full
9205R ¹	15" x 136" (38 cm x 345 cm)	1.75" (44 mm)	44 lb. (20 kg)	2.52" (64 mm)	Full
9206R ¹	15" x 144" (38 cm x 366 cm)	1.75" (44 mm)	46 lb. (21 kg)	2.52" (64 mm)	Full
9207R ²	15" x 137" (38 cm x 348 cm)	1.75" (44 mm)	46 lb. (21 kg)	2.86" (73 mm)	Full
9208R ²	15" x 146" (38 cm x 371 cm)	1.75" (44 mm)	49 lb. (22 kg)	2.86" (73 mm)	Full

¹ BackCountry design see p. 26

² BackCountry X design see p. 26

Ice Oval Series

High-performance designs engineered for the extreme cornering and acceleration of oval racing. Ice Oval Series is the track of choice for multi-time oval winner Jacques Villeneuve.

- **Lightest in class for best efficiency and power transfer**
- **“Soft” outer rubber compound maximizes traction on ice**
- **Multiple lug heights for all snow and ice conditions**



MODEL	DIMENSIONS	LUG HEIGHT	WEIGHT	DRIVE PITCH	CLIP CONFIG.
9194R ²	14" x 128" (36 cm x 325 cm)	1" (25 mm)	32 lb. (15 kg)	2.52" (64 mm)	Full
9239R ²	14" x 121" (36 cm x 307 cm)	1" (25 mm)	34 lb. (16 kg)	2.52" (64 mm)	Full
9812R	15" x 121" (38 cm x 307 cm)	0.525" (13 mm)	33 lb. (15 kg)	2.52" (64 mm)	Full
9982R ¹	13.5" x 116" (34 cm x 295 cm)	0.725" (18 mm)	28 lb. (13 kg)	2.52" (64 mm)	Full
9995R ¹	15" x 116" (38 cm x 295 cm)	0.725" (18 mm)	31 lb. (14 kg)	2.52" (64 mm)	Full
9997R ¹	15" x 121" (38 cm x 307 cm)	0.725" (18 mm)	36 lb. (16 kg)	2.52" (64 mm)	Full

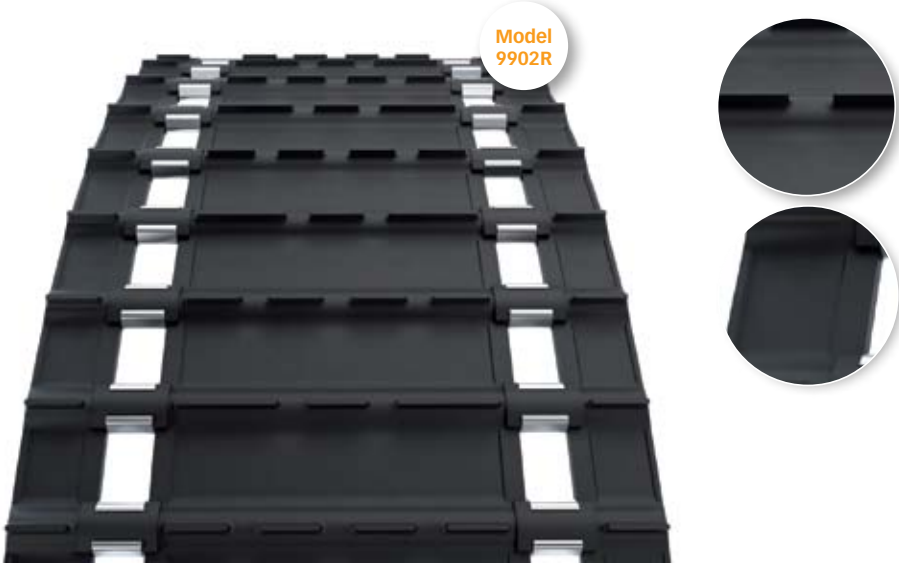
¹ See Web site for specific design

² HackSaw design see p. 21

Ice & Grass Drag

High-performance tracks designed especially for the intense acceleration of drag racing, where the first few seconds mean the difference between winning and losing.

- **Low-resistance 0.525" lugs require less fuel for optimal straight-line acceleration**
- **13.5" width available for lightweight and maximum top speed**
- **Multiple lengths for a wide variety of race chassis**



MODEL	DIMENSIONS	LUG HEIGHT	WEIGHT	DRIVE PITCH	CLIP CONFIG.
9084R	13.5" x 144" (34 cm x 366 cm)	0.525" (13 mm)	35 lb. (16 kg)	2.52" (64 mm)	Full
9811R	15" x 121" (38 cm x 307 cm)	0.525" (13 mm)	33 lb. (15 kg)	2.52" (64 mm)	Full
9902R	13.5" x 128" (34 cm x 325 cm)	0.525" (13 mm)	33 lb. (15 kg)	2.52" (64 mm)	Full
9929R	13.5" x 136" (34 cm x 345 cm)	0.525" (13 mm)	29 lb. (13 kg)	2.52" (64 mm)	No windows / clips
9937R	13.5" x 136" (34 cm x 345 cm)	0.525" (13 mm)	34 lb. (16 kg)	2.52" (64 mm)	Full
9976R	13.5" x 144" (34 cm x 366 cm)	0.525" (13 mm)	31 lb. (14 kg)	2.52" (64 mm)	No windows / clips

Asphalt Drag

- Engineered and built for the unique performance requirements of asphalt drag competitions, where traction and super-fast acceleration are the name of the game.
- Lightweight 10.625" width for maximum top speed
- Soft outer rubber provides traction on paved surfaces
- Multiple lengths for a wide variety of race chassis



MODEL	DIMENSIONS	LUG HEIGHT	WEIGHT	DRIVE PITCH	CLIP CONFIG.
9895R	10.625" x 121" (27 cm x 307 cm)	0.625" (16 mm)	33 lb. (15 kg)	2.52" (64 mm)	No windows / clips
9896R	10.625" x 128" (27 cm x 325 cm)	0.625" (16 mm)	35 lb. (16 kg)	2.52" (64 mm)	No windows / clips
9897R	10.625" x 136" (27 cm x 345 cm)	0.625" (16 mm)	37 lb. (17 kg)	2.52" (64 mm)	No windows / clips

Snowmobile F.A.Q.

Single-ply vs. two-ply tracks

Single-ply tracks have been tested and proven to be comparable with two-ply tracks for strength, durability and longevity. Single-ply tracks have been original equipment on many high-performance snowmobile models for over 5 years. Single-ply tracks require a specifically designed stud and stud retainer. Consult with your dealer and refer to the Camoplast warranty policy statement to determine warranty coverage on studding tracks.

How is the stud durability and longevity of ICE Technology tracks?

Based on the testing conducted by Camoplast, the studs generally outlast the track. This technology has been proven and used in car tires. Studded tire life is generally over 10000 miles and often used on bare asphalt and cars that weight over a ton.

How aggressive and effective are the ICE Technology tracks?

Based on Camoplast testing in regular conditions, the traction and control is comparable to conventional studding quantities for 120" and 121" tracks with 84 to 96 studs. ICE Technology studs add less than a pound of weight over an un-studded track.

What trail track does Camoplast offer that performs better in snow than my Ripsaw track?

The RipSaw track is great for groomed hard-packed trail riding, however, for loose snow or off-trail riding the Cobra Track design offers the best performance. For all-around performance, consider the new RipSaw II design.

What track lug heights are available in 13.5" width for Arctic Cat Firecat and Sabercat snowmobile models?

Two popular sizes and designs are available. The RipSaw featuring a 1.25" lug height and the HackSaw featuring a 1" lug height.

Does Camoplast offer a replacement track for Arctic Cat snowmobiles fitted with a 141" length track?

Yes, new for 2013, the BackCountry X design is available with 1.75" lug height, model 9254C.

As a consumer, can I purchase tracks directly from Camoplast?

Camoplast doesn't sell directly to end users. Please contact your local powersports dealer for access to our full line of high-performance snowmobile tracks.

The Best Track for the Best Ride

With **over 150 tracks available** for you to get the most out of winter, the following table lists every track featured in this brochure. The first column shows all the tracks sorted and grouped by length, from the shortest (116”) to the longest (174”).

If you know the track length of your snowmobile, locate it in the table. The second column is the track lug height, and it is also sorted from the lowest to the highest for each track length group. Once you have identified the desired track length and lug height, you can move on to choosing the track design (e.g. Cobra, RipSaw II) and see the model number and page number where you can review its details and specifications to help you decide if it is the track you need to get the most out of winter!

LENGTH	LUG HEIGHT	CATEGORY	TRACK DESIGN	MODEL #	REF.
116"	0.73"	RACING	ICE OVAL SERIES	9982R	P44
116"	0.73"	RACING	ICE OVAL SERIES	9995R	P44
120"	1"	TRAIL	RIPSAW	9148H	P19
120"	1"	TRAIL	RIPSAW II	9158H	P18
120"	1"	TRAIL	RIPSAW II	9210H	P18
120"	1.22"	TRAIL	ICE ATTAK XT	9190H	P15
120"	1.25"	TRAIL	ICE RIPPER XT	9164H	P17
120"	1.25"	TRAIL	RIPSAW	9149H	P19
120"	1.25"	TRAIL	RIPSAW II	9156H	P18
120"	1.25"	TRAIL	RIPSAW II	9209H	P18
120"	1.352"	TRAIL	COBRA	9092H	P20
120"	1.6"	CROSS COUNTRY	COBRA 1.6	9262C	P25
120"	1.6"	CROSS COUNTRY	ICE COBRA 1.6	9244C	P24
120"	1.75"	CROSS COUNTRY	BACKCOUNTRY X	9125C	P26
120"	1.75"	CROSS COUNTRY	CHALLENGER TRAIL	9069C	P27
120"	1.75"	RACING	SNO X (XC PRO)	9169R	P43
120"	2"	CROSS COUNTRY	BACKCOUNTRY X2	9256C	P23
121"	0.525"	RACING	GRASS / ICE DRAG	9811R	P45
121"	0.525"	RACING	ICE OVAL SERIES	9812R	P44
121"	0.625"	RACING	ASPHALT DRAG	9895R	P46
121"	0.73"	RACING	ICE OVAL SERIES	9997R	P44
121"	1"	TRAIL	HACKSAW	9009H	P21
121"	1"	TRAIL	HACKSAW	9027H	P21
121"	1"	TRAIL	HACKSAW	9043H144	P21
121"	1"	TRAIL	HACKSAW	9147H	P21
121"	1"	RACING	ICE OVAL SERIES (HACKSAW)	9239R	P44
121"	1.063"	TRAIL	ICE ATTAK	9028H	P16
121"	1.22"	TRAIL	ICE ATTAK XT	9200H	P15
121"	1.25"	TRAIL	ICE RIPPER XT	9077H	P17

LENGTH	LUG HEIGHT	CATEGORY	TRACK DESIGN	MODEL #	REF.
121"	1.25"	TRAIL	RIPSAW	9146H	P19
121"	1.25"	TRAIL	RIPSAW	9968H	P19
121"	1.25"	TRAIL	RIPSAW	9968H144	P19
121"	1.25"	TRAIL	RIPSAW II	9214H	P18
121"	1.352"	TRAIL	COBRA	9052H	P20
121"	1.5"	CROSS COUNTRY	INTENSE	9930C	P29
121"	1.75"	CROSS COUNTRY	BACKCOUNTRY	9140C	P26
121"	1.75"	RACING	SNO X (BACKCOUNTRY)	9067R	P43
121"	2"	MOUNTAIN	CHALLENGER	9798M	P32
128"	0.525"	RACING	GRASS / ICE DRAG	9902R	P45
128"	0.625"	RACING	ASPHALT DRAG	9896R	P46
128"	1"	TRAIL	HACKSAW	9110H	P21
128"	1"	TRAIL	HACKSAW	9234H	P21
128"	1"	TRAIL	HACKSAW	9960H	P21
128"	1"	RACING	ICE OVAL SERIES (HACKSAW)	9194R	P44
128"	1.063"	TRAIL	ICE ATTAK	9037H	P16
128"	1.22"	TRAIL	ICE ATTAK XT	9201H	P15
128"	1.25"	TRAIL	RIPSAW	9001H	P19
128"	1.25"	TRAIL	RIPSAW	9040H	P19
128"	1.25"	TRAIL	RIPSAW II	9215H	P18
128"	1.352"	TRAIL	COBRA	9081H	P20
128"	1.75"	CROSS COUNTRY	BACKCOUNTRY	9141C	P26
128"	1.75"	RACING	SNO X (BACKCOUNTRY)	9068R	P43



LENGTH	LUG HEIGHT	CATEGORY	TRACK DESIGN	MODEL #	REF.
129"	1.22"	TRAIL	ICE ATTACK XT	9236H	P15
129"	1.25"	TRAIL	RIPSAW II	9237H	P18
129"	1.352"	TRAIL	COBRA	9235H	P20
129"	1.6"	CROSS COUNTRY	COBRA 1.6	9263C	P25
129"	1.6"	CROSS COUNTRY	ICE COBRA 1.6	9245C	P24
129"	1.75"	RACING	SNO X (XC PRO)	9189R	P43
129"	2"	CROSS COUNTRY	BACKCOUNTRY X2	9257C	P23
136"	0.525"	RACING	GRASS / ICE DRAG	9929R	P45
136"	0.525"	RACING	GRASS / ICE DRAG	9937R	P45
136"	0.625"	RACING	ASPHALT DRAG	9897R	P46
136"	1"	TRAIL	HACKSAW	9010H	P21
136"	1.063"	TRAIL	ICE ATTACK	9029H	P16
136"	1.22"	TRAIL	ICE ATTACK XT	9202H	P15
136"	1.25"	TRAIL	ICE RIPPER XT	9079H	P17
136"	1.25"	TRAIL	RIPSAW	9969H	P19
136"	1.25"	TRAIL	RIPSAW	9969H162	P19
136"	1.25"	TRAIL	RIPSAW II	9216H	P18
136"	1.352"	TRAIL	COBRA	9061H	P20
136"	1.5"	CROSS COUNTRY	INTENSE	9108C	P29
136"	1.75"	CROSS COUNTRY	BACKCOUNTRY	9142C	P26
136"	1.75"	CROSS COUNTRY	CHALLENGER TRAIL	9933C	P27
136"	1.75"	RACING	SNO X (BACKCOUNTRY)	9205R	P43
136"	2"	MOUNTAIN	CHALLENGER	9797M	P32
137"	1"	TRAIL	RIPSAW II	9224H	P18
137"	1.22"	TRAIL	ICE ATTACK XT	9191H	P15
137"	1.25"	TRAIL	RIPSAW II	9223H	P18
137"	1.352"	TRAIL	COBRA	9093H	P20
137"	1.352"	TRAIL	COBRA	9114H	P20
137"	1.375"	TRAIL	ICE ATTACK	9134H	P16

LENGTH	LUG HEIGHT	CATEGORY	TRACK DESIGN	MODEL #	REF.
137"	1.6"	CROSS COUNTRY	COBRA 1.6	9264C	P25
137"	1.6"	CROSS COUNTRY	COBRA 1.6	9265C	P25
137"	1.6"	CROSS COUNTRY	ICE COBRA 1.6	9246C	P24
137"	1.6"	CROSS COUNTRY	ICE COBRA 1.6	9249C	P24
137"	1.75"	CROSS COUNTRY	BACKCOUNTRY X	9126C	P26
137"	1.75"	CROSS COUNTRY	CHALLENGER TRAIL	9070C	P27
137"	1.75"	RACING	SNO X (BACKCOUNTRY X)	9207R	P43
137"	2"	CROSS COUNTRY	BACKCOUNTRY X2	9258C	P23
137"	2"	MOUNTAIN	CHALLENGER	9186M	P32
137"	2.313"	MOUNTAIN	CHALLENGER	9204M	P32
141"	1.75"	CROSS COUNTRY	BACKCOUNTRY X	9254C	P26
144"	0.525"	RACING	GRASS / ICE DRAG	9084R	P45
144"	0.525"	RACING	GRASS / ICE DRAG	9976R	P45
144"	1"	TRAIL	HACKSAW	9160H	P21
144"	1.063"	TRAIL	ICE ATTACK	9106H	P16
144"	1.22"	TRAIL	ICE ATTACK XT	9203H	P15
144"	1.352"	TRAIL	COBRA	9107H	P20
144"	1.5"	CROSS COUNTRY	CROSSOVER	9003C	P28
144"	1.75"	CROSS COUNTRY	BACKCOUNTRY	9143C	P26
144"	1.75"	RACING	SNO X (BACKCOUNTRY)	9206R	P43
144"	2"	MOUNTAIN	CHALLENGER	9875M	P32
144"	2"	MOUNTAIN	CHALLENGER	9899M	P32
146"	1.352"	TRAIL	COBRA	9094H	P20
146"	1.75"	CROSS COUNTRY	CHALLENGER TRAIL	9167C	P27
146"	1.75"	RACING	SNO X (BACKCOUNTRY X)	9208R	P43
146"	2"	MOUNTAIN	CHALLENGER	9187M	P32
146"	2.313"	MOUNTAIN	CHALLENGER	9064M	P32
146"	2.5"	MOUNTAIN	CHALLENGER EXTREME	9144M	P33
146"	2.5"	MOUNTAIN	CHALLENGER EXTREME	9145M	P33

LENGTH	LUG HEIGHT	CATEGORY	TRACK DESIGN	MODEL #	REF.
146"	2.5"	MOUNTAIN	PEAK 2.5	9179M	P34
146"	2.5"	MOUNTAIN	PEAK 2.5	9182M	P34
151"	1.5"	CROSS COUNTRY	CROSSOVER	9004C	P28
151"	2"	MOUNTAIN	CHALLENGER	9876M	P32
153"	2.5"	MOUNTAIN	CHALLENGER EXTREME	9174M	P33
154"	1.375"	UTILITY	RIPSAW FULL	9089U	P40
154"	1.5"	UTILITY	COBRA WT	9196U	P38
154"	1.8"	UTILITY	COBRA WT	9195U	P38
154"	2"	MOUNTAIN	CHALLENGER	9188M	P32
154"	2.313"	MOUNTAIN	CHALLENGER	9065M	P32
154"	2.5"	MOUNTAIN	CHALLENGER EXTREME	9102M	P33
154"	2.5"	MOUNTAIN	CHALLENGER EXTREME	9104M	P33
154"	2.5"	MOUNTAIN	PEAK 2.5	9178M	P34
154"	2.5"	MOUNTAIN	PEAK 2.5	9181M	P34
154"	2.5"	MOUNTAIN	PEAK 2.5	9230M	P34
154"	2.5"	MOUNTAIN	PEAK 2.5	9232M	P34
156"	1.25"	UTILITY	ICE WIDETRACK	9008U	P39
156"	1.25"	UTILITY	RIPSAW FULL	9002U	P40
156"	1.25"	UTILITY	RIPSAW FULL	9151U	P40
156"	1.5"	UTILITY	COBRA SWT	9261U	P37
156"	1.75"	UTILITY	COBRA SWT	9260U	P37
156"	3"	MOUNTAIN	CHALLENGER EXTREME	9225M	P33
156"	3"	MOUNTAIN	CHALLENGER X3	9270M	P31
159"	1.5"	CROSS COUNTRY	CROSSOVER	9005C	P28
162"	2.5"	MOUNTAIN	CHALLENGER EXTREME	9175M	P33
162"	2.5"	MOUNTAIN	CHALLENGER EXTREME	9176M	P33
162"	3"	MOUNTAIN	CHALLENGER X3	9219M	P31
162"	3"	MOUNTAIN	CHALLENGER X3	9220M	P31
163"	2.5"	MOUNTAIN	CHALLENGER EXTREME	9103M	P33

LENGTH	LUG HEIGHT	CATEGORY	TRACK DESIGN	MODEL #	REF.
163"	2.5"	MOUNTAIN	CHALLENGER EXTREME	9105M	P33
163"	2.5"	MOUNTAIN	PEAK 2.5	9177M	P34
163"	2.5"	MOUNTAIN	PEAK 2.5	9180M	P34
163"	2.5"	MOUNTAIN	PEAK 2.5	9231M	P34
163"	2.5"	MOUNTAIN	PEAK 2.5	9233M	P34
174"	2.5"	MOUNTAIN	CHALLENGER EXTREME	9035M	P33
174"	2.5"	MOUNTAIN	CHALLENGER EXTREME	9036M	P33
174"	3"	MOUNTAIN	CHALLENGER EXTREME	9115M	P33
174"	3"	MOUNTAIN	CHALLENGER X3	9271M	P31

Check Out All the Camoplast Options

We have a wide range of tracks available to help revive your ride. See them on our website at www.camoplastsolideal.com or talk to your Camoplast sales rep today!

A Warranty to Make the Most Out of Every Winter

Made from premium quality rubber and precision-assembled to the strictest tolerances using the most advanced manufacturing technologies, Camoplast tracks are recognized as the best by snowmobilers around the world. And they are backed by the best warranty in the track business.

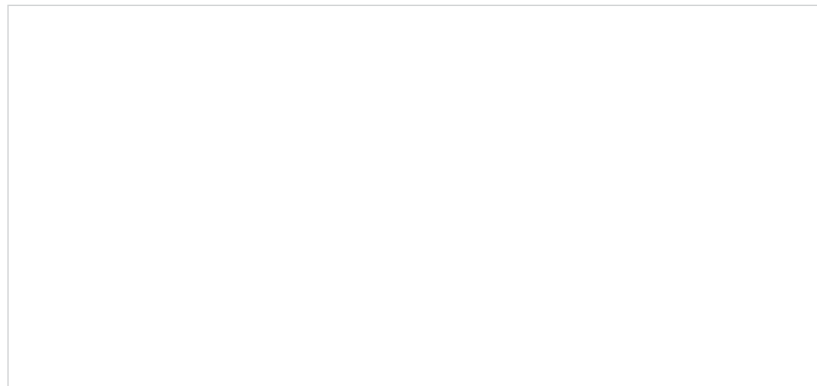
No matter what Camoplast track you choose, we guarantee long service life, exceptional resistance to damage, low maintenance, and superior traction.

**To view all Camoplast has to offer,
visit our Web site at www.camoplastsolideal.com**

World Class Service

Camoplast technical expertise and service is second to none. Wherever you are located in the world, there's a Camoplast expert ready to respond to your every question or need to help you get the most from your snowmobile experience.

You can access Camoplast expertise through any of our many distributors located around the world, or through our direct assistance line. If you have a technical or customer service question, please call us toll-free at 1-88-TRACTION (1-888-722-8466) Or email us at servicesnowtracks@camoplastsolideal.com



Not all tracks can be installed without modifications. Please see your Camoplast Solideal dealer for installation assistance. Due to our ongoing commitment to quality and innovation, Camoplast Solideal Inc. reserves the right to discontinue or change models, specifications, designs, or equipment without incurring any obligation. Camoplast Solideal sells only through authorized distributors. Contact your local dealer for availability and pricing. Camoplast Solideal snowmobile tracks are manufactured in the United States of America. © All rights reserved. © and ™ are trademarks of Camoplast Solideal Inc.